

Queen Raised All-In-One with Sueded Top 80 x 60 x 18 inch

pure
comfort®

simply good products
for real life™

Model No. 6004QRB

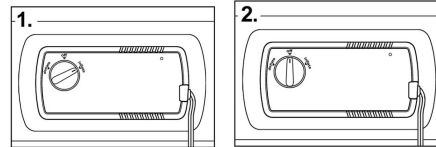
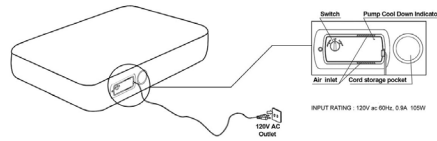
Ensure the following items are included in the package:

- Queen Sized Raised Mattress with Built-In Pump
- Carry and Storage Bag
- Repair Kit



TO INFLATE:

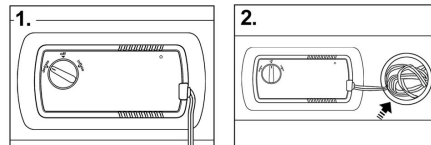
1. Check your surroundings for any sharp objects on the ground/floor that may cause damage to the bed (nails, screws, sharp rocks, etc.).
2. Unfold the bed and lay it flat on the floor.
3. Ensure the Pump is in the “OFF” position.
4. Connect the Pump cord to an electrical outlet as shown above.
5. Make sure the air inlet vents are clear of any obstructions.
6. Rotate the Pump knob clockwise to the “INFLATE” position as shown in Figure 1.
7. When air mattress reaches the desired firmness, rotate the Pump knob back to the “OFF” position as shown in Figure 2.



DO NOT OVERINFLATE! INFLATE UNTIL THE WRINKLES IN PVC ARE ALMOST GONE, AND THE MATTRESS IS FIRM.

TO DEFLATE:

1. Connect the Pump cord to an electrical outlet as shown above.
2. Rotate the Pump knob counterclockwise past the “OFF” setting to “DEFLATE.”
3. Allow the bed to fully deflate, and then turn the knob to the “OFF” position.
4. Disconnect the Pump cord from the outlet and place it into the Cord Storage Pocket.
5. Fold the bed and place into the carry bag if desired.



INFLATING WITH EMERGENCY FILL VALVE: In the event of a failure of the Built-in Pump, this bed is equipped with a secondary inflation valve. Extend small valve out from side of bed. Open valve cap and fill bed with external pump (not included). **DO NOT** use a high pressure pump. A Manual Pump--such as a foot pump or bike pump w/ adapter is recommended. Close valve cap and push valve back into bed when done. **DO NOT OVERINFLATE**

ADDITIONAL INFORMATION FOR USING REPAIR KIT ON REVERSE SIDE

- **DO NOT OVER OR UNDER INFLATE.**
- **CAUTION: AFTER INFLATION, A CHANGE TO HOT WEATHER WILL CAUSE AIR TO EXPAND. YOU MUST RELEASE AIR TO PREVENT AIRBED FROM FAILING DUE TO OVERPRESSURE. A CHANGE TO COLD WEATHER WILL CAUSE AIR TO CONTRACT. YOU MAY NEED TO ADD AIR TO MAINTAIN FIRMNESS. AVOID USING IN EXTREME TEMPERATURES.**
- **KEEP AWAY FROM SHARP EDGES, NAILS, OR ANY SHARP OR POINTED OBJECTS.**
- **DO NOT STAND, WALK, OR JUMP ON BED. DO NOT ALLOW CHILDREN TO PLAY OR JUMP ON BED.**
- **KEEP AWAY FROM OPEN FLAME AND HEATERS.**
- **DO NOT SMOKE ON THE BED.**
- **THIS IS NOT A LIFE SAVING DEVICE. DO NOT USE AS A FLOTATION DEVICE OR AS A WATER TOY.**
- **DO NOT LET YOUNG CHILDREN SLEEP ON THIS MATTRESS UNTIL MATURE ENOUGH TO SLEEP IN AN ADULT BED. YOUNG CHILDREN CAN SUFFOCATE, ESPECIALLY IN THE CASE OF UNEXPECTED DEFLATION. NEVER LEAVE A CHILD UNATTENDED OR SLEEP ON SAME MATTRESS AS A YOUNG CHILD.**
- **FILL WITH COLD AIR ONLY. NEVER USE A HAIR DRYER TO INFLATE.**
- **MAXIMUM WEIGHT: 500 LBS./226KGS TOTAL.**
- **SEE ADDITIONAL INFORMATION REGARDING REPAIR KIT ON BACK**

Manufactured by Pure Global Brands, Inc.
West Palm Beach, FL

pure
global brands inc

READ THIS FIRST!!!



WARNING
CHOKING HAZARD – Small parts
NOT for children under 3 years.

! Warning!

While every attempt is made to ensure the highest degree of protection in all equipment, we cannot guarantee freedom of injury. The user assumes all risks of injury due to use. All merchandise is sold on this condition, which no representative of the company can waive or change.

pure
comfort

CUSTOMER SERVICE: 866-498-5269
customerservice@puregbi.com

pure
comfort

NOTE: The airbed material may stretch during use and the mattress may need additional air over a period of time. The air inside of the bed may expand and contract with varying temperatures and conditions. To extend the life of this product, never unfold or inflate the airbed in temperatures below freezing, avoid prolonged exposure to the sun, and protect from contact with rough ground.

ALTERNATE VALVE INFLATION: In the event of a failure of the Built-in Pump, this bed is equipped with a secondary inflation valve. Open valve cap to fill bed with external pump (not included).

REPAIR KIT USE:

1. Locate the leak. For small leaks, inflate the bed and spray the suspected location of a leak with water. Look for air bubbles indicating the leak source. Once found, DEFLATE the airbed.

2. Clean the affected area with soap and water, rinse thoroughly and allow to fully dry. Cut a piece of patch material that will fully cover the puncture. Apply the self-adhesive patch to the leak by peeling off the backing and placing it sticky side down on the airbed. Rub patch to ensure adhesion. Allow (4) Four hours for the repair to set before attempting to inflate the airbed.

LIMITED WARRANTY

Pure Global Brands, Inc. warrants this product to be free from defects in workmanship and materials under normal use and conditions for a period of **90 DAYS FROM THE DATE OF ORIGINAL PURCHASE**. This Limited Warranty is not transferable and is available only for the original purchaser of the Product. The Company's obligation under this warranty is limited to replacing or repairing the Product, at the discretion of the Company.

All warranty coverage extends only to the original retail purchaser from the date of purchase. Pure Comfort's™ obligation under this Warranty is limited to replacing or repairing, at Pure Comfort's™ option, the product at one of its authorized service centers. All products for which a warranty claim is made must be received by Pure Comfort™ at one of its authorized service centers and accompanied by sufficient proof of purchase (photocopy of the original store receipt, indicating the date of purchase). All freight and handling fees are the responsibility of the consumer to pay, both to and from Pure Comfort™. All warranty claims must be preauthorized by Pure Comfort™. Preauthorization can be obtained by calling 866-498-5269. This warranty does not extend to any product or damage to a product caused by or attributable to freight damage, abuse, misuse, improper or abnormal usage, or repairs not provided by a Pure Comfort™ authorized service center or for products used for commercial or rental purposes. This warranty does not cover ordinary wear and tear, weathering, failure to follow directions, improper installation, improper maintenance, or acts of Nature (such as damage caused by wind, lightning, snow, water, or ice). Weather damage, damage caused by unauthorized repair work or damage caused by improper use of the products are not covered by the product warranty. No other Warranty beyond that specifically set forth above is authorized by Pure Comfort™.

Pure Comfort™ IS NOT RESPONSIBLE OR LIABLE FOR INDIRECT, SPECIAL OR CONSEQUENTIAL DAMAGES ARISING OUT OF OR IN CONNECTION WITH THE USE OR PERFORMANCE OF THE PRODUCT OR OTHER DAMAGES WITH RESPECT TO ANY ECONOMIC LOSS, LOSS OF PROPERTY, LOSS OF REVENUE OR PROFITS, LOSS OF ENJOYMENT OR USE, COST OF REMOVAL, INSTALLATION OR OTHER CONSEQUENTIAL DAMAGES. SOME STATES DO NOT ALLOW THE EXCLUSION OR LIMITATION OF INCIDENTAL OR CONSEQUENTIAL DAMAGES. ACCORDINGLY, THE ABOVE LIMITATION MAY NOT APPLY TO YOU. THE WARRANTY EXTENDED HEREUNDER IS IN LIEU OF ALL OTHER WARRANTIES AND Pure Comfort™ SPECIFICALLY DISCLAIMS ANY IMPLIED WARRANTY OF MERCHANTABILITY OR FITNESS FOR A PARTICULAR PURPOSE IS LIMITED IN ITS SCOPE AND DURATION TO THE TERMS SET FORTH HEREIN. SOME STATES DO NOT ALLOW LIMITATION ON HOW LONG AN IMPLIED WARRANTY LASTS. ACCORDINGLY, THE ABOVE LIMITATION MAY NOT APPLY TO YOU.

This warranty gives you specific legal rights. You may also have other rights, which vary from state to state

CHECK OUT THESE NEW PURE COMFORT™ PRODUCTS NOW AVAILABLE FOR SALE

5-in-1 Sofa Bed w/Coil Beam Flock Top

Inflates in only 5 minutes with the included electric air pump! This sofa Recliner, Lounger and Kids' Bed. The coil-beam top design of all Pure Comfort Air Beds means you will actually sleep well! The 2-in-1 valve makes inflating and deflating a breeze, making this extra bed so easy to use and store. Durable waterproof cover means the bed can be used for camping, as well as a handy extra bed indoors. Also included is a Repair Kit. Uses standard Queen Size sheets when used as a Queen Bed, or standard Twin sheets when used as a Kids Bed.



“Camouflage” and “Zebra” Queen Size Raised Air Bed w/Coil Beam Flock Top*

***Tie Dye (not pictured) also available**

Inflates in only 4 minutes with the included electric air pump!

The coil-beam top design of all Pure Comfort Air Beds means you will actually sleep well! The 2-in-1 valve makes inflating and deflating a breeze, making this extra bed so easy to use and store. Durable waterproof lush top means the bed can be used for camping, as well as a handy extra bed indoors. Also included are a Repair Kit and Travel/Storage Bag. Uses standard Queen Size sheets.



Portable Battery-Powered Air Pump

Great for camping and outdoor use when electric power is unavailable or inconvenient! Easy to use for inflatable toys, air beds, mattresses, etc. Includes 3 universal nozzles, Air Pressure = 0.42psi. Uses “4” D batteries (not included) Includes usage instructions

